

**California Career Pathways Trust Grant  
2014 - 2017**

# Diablo Gateways to Innovation



# What is the Diablo Gateways to Innovation (DGI) Consortium?

- A coalition of 10 school districts in 3 counties, 4 community colleges, one Cal State University, 2 County Offices of Education, 2 Regional Occupation Programs and 2 Workforce Investment Boards
  - Antioch USD
  - Benicia USD
  - Dublin USD
  - John Swett USD
  - Livermore Valley JUSD
  - Martinez USD
  - Mt. Diablo USD
  - Pittsburg USD
  - Pleasanton USD
  - San Ramon Valley USD
  - Diablo Valley College
  - Las Positas College
  - Los Medanos College
  - Solano Community College
  - California State University East Bay
  - Alameda COE
  - Contra Costa COE (Lead fiscal agency)/ROP
  - Tri-Valley ROP
  - Alameda County Workforce Investment Board
  - Workforce Development Board of Contra Costa County

# What is the California Career Pathways Trust Grant?

- An initiative sponsored by the California Department of Education
  - Goals:
    - Increase and strengthen Career Pathways in grades K-14 that lead to employment in fast-growing local industry sectors
    - Expand and improve partnerships between K-12 schools, community colleges, universities, Workforce Development Boards and employers
    - Provide a regional approach to Career Technical Education that benefits students and employers

# California Career Pathways Trust Focus and Goal

- Target K–14 career pathway programs that provide students with a sequenced pathway of integrated academic and career-based education and training, aligned to current or emerging regional economic needs. Career pathway programs are designed to lead students to a postsecondary degree or certification in a high-skill, high-wage, and high-growth field.
- The overarching goal is to build robust partnerships between employers, schools, and community colleges in order to better prepare students for the 21<sup>st</sup> century workplace and improve student transition into postsecondary education, training, and employment.

# The Goal of the Diablo Gateways to Innovation Consortium

- Create a regional approach to Career Pathways that allows students from throughout the region to successfully transition from middle school to high school to post-secondary education to employment in local businesses.

# Our Challenges

- 14% of students do not complete high school
- 57% of high school graduates are not college ready (have not completed A-G requirements)
- Over 50% of students entering regional community colleges and CSU are required to take remedial math or English or both

# DGI Targets Career Pathways in 3 Industry Sectors

- Advanced Manufacturing/Engineering (9 districts, 20 pathways, 45 course titles)
- Information and Communication Technology (6 districts, 16 pathways, 19 course titles)
- Health/Bio Science (5 districts, 22 pathways, 18 course titles)

# DGI Grant Elements

- Professional Development to identify and institutionalize effective practices
- Regional professional learning community (PLC) for college and career pathways
- Industry engagement intermediary
- Data system
- Leadership structure to identify blockages
- Regional marketing strategy



# Grant Details

- \$7,998,000 awarded over first 3 years of the 5 year grant term
  - 50% awarded in 2014-15
  - 35% awarded in 2015-16
  - 15% awarded in 2016-17
  - With a goal of sustainability in 2017-18, 2018-19 and beyond
- I80/I880 Consortium also awarded grant
  - \$15,000,000
  - 4 Industry Sectors
    - Same as DGI plus Law/Public Safety

### Diablo Gateways to Innovation and 80/880 Corridor CCPT Applications



I-80 Corridor (Blue) and I-680 (Yellow) Consortium Service Areas with Distribution of Member Districts and Colleges

# DGI Industry and Community Partners

- Alameda County Workforce Investment Board
- Antioch Chamber of Commerce
- Bayer HealthCare
- Career Ladders Project
- College and Career Academy Support Network
- ConnectEd
- Contra Costa Economic Partnership
- Delta Diablo Sanitation District
- Dow Chemical
- East Bay Economic Development Alliance
- East Bay Leadership Council
- Hattich Contracting
- Health Workforce Initiative
- Lawrence Livermore National Lab
- Pacific Gas & Electric
- Phillips 66
- Workforce Development Board of Contra Costa County

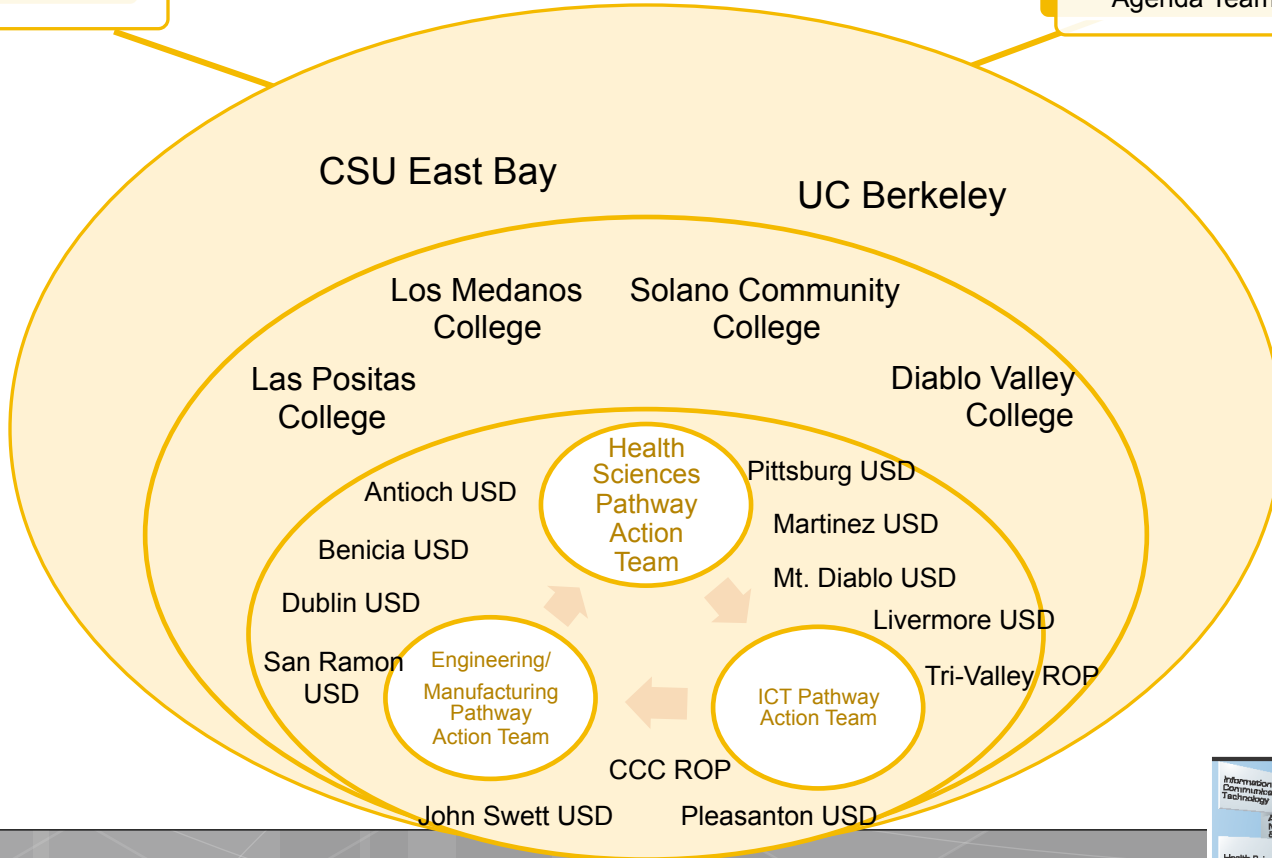
# DGI Structure

- Executive Committee
  - Decision-making group of senior leaders from select partners
- Consortium Committee
  - Advisory and oversight
  - Includes representatives from every partner
- Grant Coordinator

# DGI Structure (continued)

- Workplace Intermediary Lead
- Data Management Lead
- Professional Development Lead
  - Project Manager and Administrative Support
  - Technical Assistance Providers (including CCASN, ConnectEd, Career Ladders, others)
- Pathways Action Teams
  - One team for each sector
  - Teams are composed of at least one teacher/faculty member, one counselor, and one administrator from each K-12 district and community college

# DGI Leadership and Implementation Structure



# Many Approaches to Creating College and Career Pathways

Including:

- Wall-to-wall academies
- Sequence of CTE courses
- California Partnership Academies
- Linked Learning
- Other (mixed)

# Professional Development Opportunities

- Collaborative team building to develop pathways strategies
- Curriculum and instruction best practices
- Articulation and credit
- Technology applications
- Course sequencing and pathway management
- College and Career Counseling strategies
- Site visits to exemplary sites and workplaces engaged in work based learning
- Other (to be surfaced during action team meetings)



# Project Metrics

- 6617 students enrolled in a target career pathway programs and completing a Student Education Plan
- Number of students that complete with a C or better
- Number of students completing dual enrollment, concurrent enrollment, credit-by-exam to receive college credit while in high school
- Number of students participating in work-based learning
- Number of programs tracking progress to higher education and employment
- Number of employers engaged

# Impact on High Schools and Community Colleges

- New and strengthened pathways
- Strengthened connections to business and improved work-based learning
- Improved systems for promoting pathways
- Better approaches to supporting students in basic skill development
- Participation in a professional learning community
- Data system that provides easy access to information to support student learning and track student outcomes
- Regional, shared understanding of student expectations and markers of successful completion

# Impact on Students

- New and strengthened pathways - better prepared for college and careers
- More and better opportunities for work-based learning
- Relevant educational experience
- Better access to information about school and work opportunities
- Better support for basic skill development
- System to facilitate seamless transition from high school to college and career

# Impact on Business

- Strengthened relationship between education and business with clearly defined roles to promote efficiency and mutual benefit
- Clear articulation of services provided to schools
- Alignment between schools and businesses to meet local industry demand
- Increase in work-ready graduates
- System to facilitate seamless transition from high school to college and career

# For more information

Contact:

Janet Haun or

Tamara Prosise

Contra Costa County Office of  
Education

[jhaun@cccocoe.k12.ca.us](mailto:jhaun@cccocoe.k12.ca.us)

[tprosise@cccocoe.k12.ca.us](mailto:tprosise@cccocoe.k12.ca.us)